



Elite Series[TI]

Robust Facial Recognition
and Thermal Imaging Temperature Detection Terminal
with Ultra-large Capacity

ZK BioSecurity



0.1s Rapid
Temperature Detection



Up to 120cm
Detection Distance



Touchless for
Better Hygiene



Temperature
Detection



Masked Face

Elite Series[TI] is a fully upgraded version of the Elite Series Visible Light facial recognition terminals using Thermal Imaging intelligent engineering facial recognition algorithms and the latest computer vision technology. It is a new high-level facial recognition and Thermal Imaging Temperature Detection terminal supported with ZKTeco's customized powerful CPU and ultra-large capacity of facial templates, a maximum of 50,000 facial templates for 1:N recognition.

Elite Series[TI] adopts touchless recognition technology and exclusive features, namely temperature detection and masked individual identification, which detects and limits access if a user has out-of-range body temperature or does not wear a mask and eliminates hygiene concerns effectively. It is also equipped with an ultimate anti spoofing algorithm for facial recognition against almost all types of fake photos and videos attack.

The terminal with temperature and mask detection will be a perfect choice to help reduce the risk of infection and germs spreading during the recent global public health issue as well. Elite Series[TI] enables fast and accurate body temperature measurement and masked individual identification during facial and palm verification at all access points, especially in hospitals, factories, schools, commercial buildings, airports, stations, and other public areas.

Features

- Ultra-large capacity: 30,000 facial templates (standard) or 50,000 facial templates (optional) for 1:N facial authentication
- Unrivalled facial recognition speed (less than 0.3 seconds per face)
- 2MP starlight CMOS sensor camera with WDR function, which enables the terminal to recognize faces under a challenging lighting environment (0.5 lux to 50,000 lux)
- Anti-spoofing algorithm against print attack (laser, color and B/W photos), videos attack, and 3D mask attack
- Smart energy-saving design; a microwave detector will wake up the terminal when it precisely detects the distance between the user and the device is 300cm (9.84ft) or less
- 8" touchscreen with 400lux, which offers high visibility under strong and direct light
- Supplement lighting with adjustable brightness
- Multiple communication methods: TCP/IP
- Temperature Measurement Accuracy: $\pm 0.3^{\circ}\text{C}$ ($\pm 0.54^{\circ}\text{F}$), tested in 80cm (2.63ft) under 25°C (77°F) environment
- Mask detection; facial verification available with masks
- 0.1s Rapid Temperature Detection with measurement distance of 30cm to 120cm

* Facial verification for masked individuals will increase FAR.

* The temperature measurement data is for reference only, and not for any medical purpose.

* Elite Access[TI] & Elite Pass[TI] are not suitable for intense light and high-temperature environments. It is advised to use the product indoor without wind.

Specifications

Capacity

Faces:	30,000 (standard) 50,000 (optional)
Users:	50,000
Transactions:	1,000,000
User Photos:	20,000
Event Photos:	10,000

Compatibility

Security Relay Box
Wiegand / RS485 / RS232 Slave Reader
With FP / RFID / Barcode (optional)
ZKBioSecurity Software

Standard Functions

Access Levels, Groups, Holidays, DST,
Duress Mode, Anti-Passback,
Record Query, Custom Wallpaper &
Screen Saver, Tamper Switch Alarm

Access Control Interfaces

Lock Relay Output
Alarm Output / Auxiliary Input
Exit Button / Door Sensor

Preventative Measures

Mask Detection
Body Temperature Detection
Temperature Measurement Accuracy:
 $\pm 0.3^{\circ}\text{C}$ ($\pm 0.54^{\circ}\text{F}$)
Temperature Measurement Range:
 20°C to 50°C (68°F to 122°F)

Special Functions

0.3s High Speed Facial Recognition
Alive Body Detection
HTTPS Encryption (optional)
Event Snapshot

Hardware

900MHz Dual Core Customized CPU
512MB RAM / 8G Flash
125kHz EM Reader / 13.56MHz MF (optional)
2MP WDR Low Light Camera
Hi-Fi Audio
Microwave Distance Detection Sensor
8" High Brightness IPS Touch LCD
Reset Button & Tamper Switch

Communication

TCP / IP

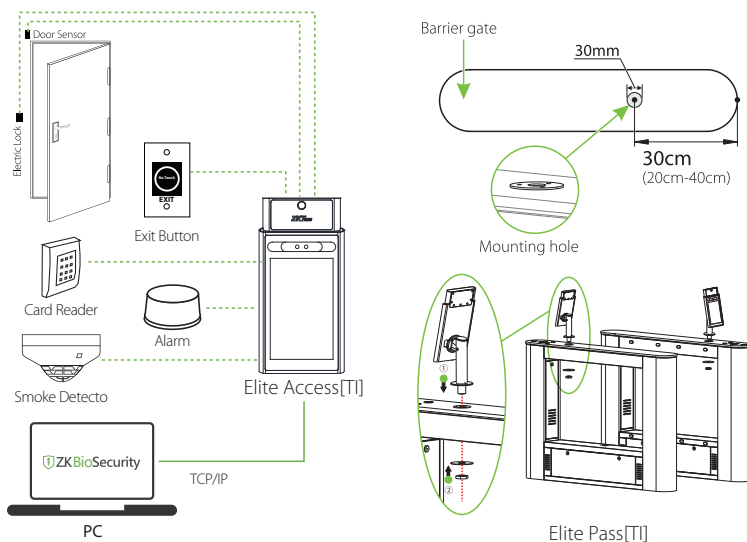
Power

Operating Voltage 12V DC
Current Draw <2,000mA

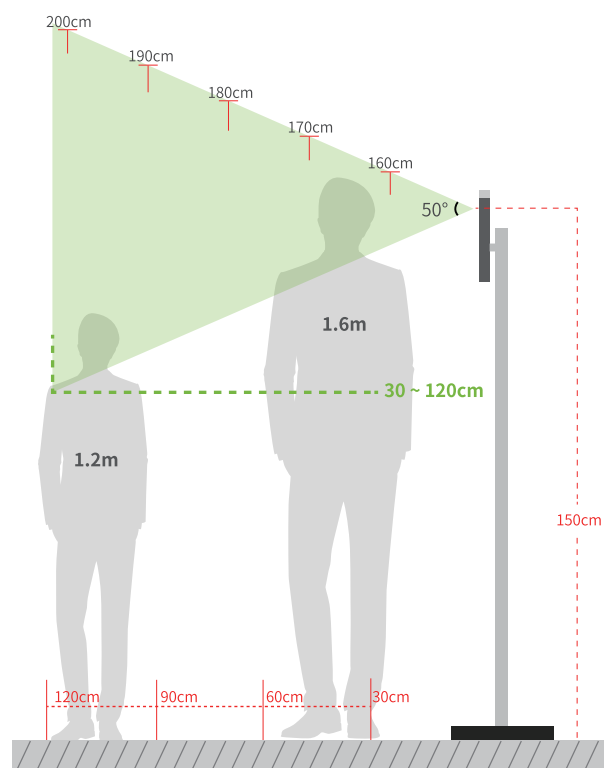
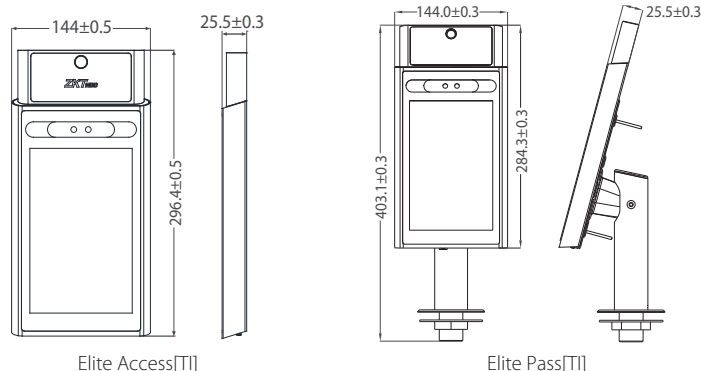
Additional Information

Face Algorithm:	ZKLiveFace 5.8
Working Temperature:	16°C to 35°C (60.8°F to 95°F)
Working Humidity:	$\leq 93\%$
Storage Temperature:	-40°C to 65°C (-40°F to 149°F)
Storage Humidity:	$\leq 93\%$
Elite Access[TI]'s Net Weight:	1.42kg
Elite Access[TI]'s Gross Weight:	2.5kg to 15kg
Elite Pass[TI]'s Net Weight:	1.83kg
Elite Pass[TI]'s Gross Weight:	2.96kg to 18.21kg
Elite Access[TI]:	144mm*296.4mm*28.7mm
Elite Pass[TI]:	144mm*296.4mm*25.5mm

Wiring Diagram



Dimensions (mm)



Recommended Installation Height : 150cm
Temperature Measurement Distance : 30cm to 120cm

