

F18

Fingerprint Access Control Terminal



Fingerprint
Recognition



2.4G Wi-Fi



RFID



Communication
network cable

Compatible with



ZKBio CVAccess

Compatible with



ZKBio Time



F18 is an innovative biometric fingerprint reader for access control application. With high-performance firmware functions and compact design, it has become one of ZKTeco's most popular devices. It is applied with ZKTeco's latest firmware with user-friendly UI and flexible user privilege settings for multi-level management. The new hardware platform uses ZMM210 core-board with 1.2Ghz CPU. With optimization of both hardware platform and firmware, the new f18 is able to verify fingerprints with even higher efficiency. The device offers flexibility of both standalone installation with any third-party access control panels which support standard Wiegand signal. TCP/IP is also available which enable F18 to be applied in different network.

F18 standard with AC push firmware connect to ZKBio CVAccess, optional standalone firmware, and also optional TA push firmware connect to ZKBio Time.

Features



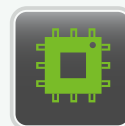
TFT Color Screen

- Audio-visual indication for acceptance and rejection of valid/invalid fingerprints
- More simple and convenient operation



Slim and Elegant Design

- Streamlined and slim design for narrow spaces



New Platform

- ZMM210 hardware with 1.2GHz CPU further speeds up processing time



Easy Installation and Connectivity

- Wiegand input & output
- Network interface by TCP/IP



Full Access Control Features

- Webserver
- Anti-passback
- Access control interface for 3rd party electric lock, door sensor, exit button, alarm and doorbell



New Firmware

- Adopts new firmware which optimizes various functions and supports flexible user privilege setting for multi-level management
- Standard AC Push
- Optional TA push

Specifications

Display	2.4-inch TFT LCD Color Screen
Fingerprint Capacity	3000
Card Capacity	5000(Optional) ID/IC/HID Prox/HID iclass card
Transaction Capacity	100,000
Sensor	ZK Optical Sensor
Algorithm Version	ZK Finger V10.0
Communication	RS232/485*, TCP/IP, USB-host
Access Control Interface	3rd Party Electric Lock, Door Sensor, Exit Button, Alarm, Doorbell
Wiegand Signal	Input, Output, SRB
Functions	DST, Record Query, Anti-passback, External RS485 fingerprint reader, Printer(Optional), WIFI(Optional), https(Optional)
Power Supply	12V DC, 3A
Operating Temperature	0 °C- 45 °C
Operating Humidity	20%-80%
SDK and Software	AC push, ZKBio CVAccess / TA push, ZKBioTime8.0 / Standalone SDK, ZKAccess3.5
Dimension(WxDxH)	80×183×42mm

* Note: RS232 is for external printer and RS485 is for RS485 readers.

Optional Accessories



FR1200



RFID Reader



Exit Button



Electric Lock

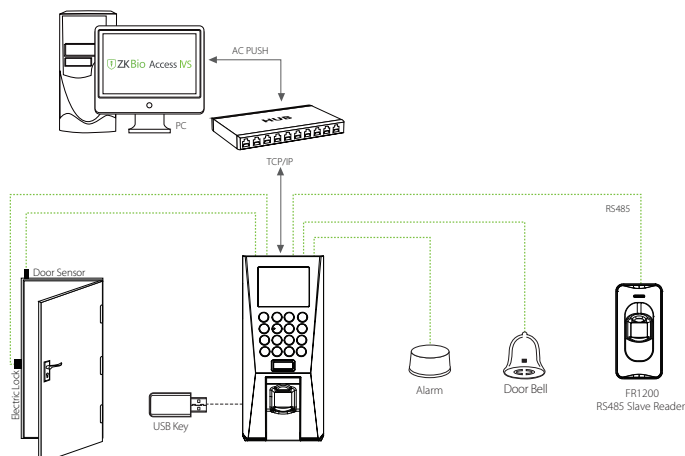


Alarm

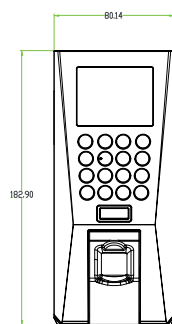
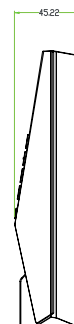


Sensor

Configuration



Dimensions (mm)



V1.1 12/27/2023